



**October 1, 2014**  
**Column C Breakdown**

<i>Grade</i>	<i>Staff Free</i>	<i>Choice</i>	<i>Tuition In</i>	<i>Sped Tuition</i>	<i>Total</i>
<i>K</i>	6	1	0	0	7
<i>1</i>	5	2	0	0	7
<i>2</i>	4	4	0	0	8
<i>3</i>	5	6	0	0	11
<i>4</i>	6	2	0	0	8
<i>5</i>	5	0	0	0	5
<i>6</i>	2	2	0	0	4
<i>Elem. Total</i>	33	17	0	0	50
<i>Out District</i>	0	0	0	0	0
<i>Total</i>	33	17	0	0	50
<i>7</i>	2	4	0	0	6
<i>8</i>	3	3	0	0	6
<i>Sub Total</i>	5	7	0	0	12
<i>9</i>	5	3	1	0	9
<i>10</i>	2	5	1	0	8
<i>11</i>	2	5	0	0	7
<i>12</i>	3	5	0	0	8
<i>UG</i>	0	0	0	0	0
<i>Sub Total</i>	12	18	2	0	32
<i>Out District</i>	1	0	0	0	1
<i>Secondary</i>	18	25	2	0	45
<i>Grand Total</i>	51	42	2	0	95

Actual  
Acton-Boxborough  
Grade 1-6  
2014-2015  
October 1, 2014

Grade YOG	Blanchard			Total	Conant			Total	Douglas			Total	Gates			Total	McCarthy-Towne			Total	Merriam				Total	#Sec.	Avg. Siz			
Rm	BAD	BPM		CAD	CAM	I	DAD1	DAD2	DAM		GAD	GAM	GPM		TAD1	TAD2	TAM		MAD	MAM	MPM	I								
K-27	21	21	42	20	20	40	20	20	21	61	21	19	20	60	19	19	22	60	20	18	19	57	320	16	20.0					
Rm	211	213	2	3	4	6	1	3	4	5	0	3	5	1	310	311	312	2	224	234	323	1	7							
Gr. 1-26	20	20	40	22	23	23	68	21	23	20	64	22	22	44	20	22	22	64	22	23	22	67	347	16	21.7					
Rm	219	221	227	4	5	7	8	6	7	8	2	10	8		301	302	303	1	133	231	334	1	8							
Gr. 2-25	17	18	17	52	23	22	22	67	23	23	23	69	22	22	44	22	23	23	68	22	23	22	67	367	17	21.6				
Rm	226	229	231	7	10	17	9	10	11	9	0	6	7	9	2	313	314	315	1	223	233	322	1	11						
Gr. 3-24	22	22	23	67	22	23	21	66	22	23	23	68	22	22	22	66	21	21	21	63	22	21	22	65	395	18	21.9			
Rm	243	245	247	2	18	20	14	12	13	14	0	18	19	20	2	213	214	215	1	230	324	330	331	3	8					
Gr. 4-23	20	20	19	59	24	25	24	73	24	24	24	72	24	24	24	72	24	23	24	71	23	23	23	24	93	440	19	23.2		
Rm	118	128	130	0	14	15	16	0	19	20	21	2	11	15	17	1	210	211	212	2	235	321	332	335	0	5				
Gr. 5-22	21	21	17	59	24	24	25	73	25	24	25	74	23	24	24	71	22	23	24	69	23	23	24	24	94	440	19	23.2		
Rm	108	110	112	2	11	12	13	15	16	17	0	12	13	14	1	113	114	115		125	232	353	1	4						
Gr. 6-21	25	25	25	75	23	25	24	72	24	24	24	72	25	24	23	72	25	23	24	72	24	25	24	73	436	18	24.2			
			19			2				6			8			7						8		50						
<b>Total</b>	19 Sec. Average	20.7	<b>394</b>	20 Sec. Average	23.0	<b>459</b>	21 Sec. Average	22.9	<b>480</b>	19 Sec. Average	22.6	<b>429</b>	21 Sec. Average	22.2	<b>467</b>	23 Sec. Average	22.4	<b>516</b>	<b>2745</b>	<b>123</b>	<b>22.3</b>									
Range	17	25		20	25		20	25		19	25		19	25		18	25													
	29 Acton residents attend Boxborough																													
	23 Boxborough residents attend school in Acton																													

ALL DAY K - BAD, CAD, DAD1, DAD2, GAD, TAD1, TAD2, and MAD

# Acton-Boxborough Regional School District

October 1, 2014

Grade	Acton	Boxborough	*Non-Residents	Total
K	275	38	7	320
1	303	37	7	347
2	314	45	8	367
3	325	59	11	395
4	377	55	8	440
5	377	58	5	440
6	356	76	4	436
7	354	68	6	428
8	400	73	6	479
9	372	76	9	457
10	400	71	8	479
11	404	75	7	486
12	393	82	8	483
Ungraded	0	0	0	0
Post-Grads	0	0	0	0
Sped Out of District	78	15	1	94
Other	0	0	0	0
<b>Total</b>	<b>4728</b>	<b>828</b>	<b>95</b>	<b>5651</b>
Acton Enrollment	4728			
Boxborough Enrollment	828			
Total Acton /Boxborough	5556			
Acton %	85.10%			
Boxborough %	14.90%			
Total Percentage	100.00%			

\*Non-Residents include: Choice, Staff Children and Sped Tuition-in

## Enrollment by Race October 1, 2014

School	Low Income	Asian/Pacific Islander	African- American	Caucasian	Hispanic	American Indian	Minority	Percent Minority	Percent Asian	Total
Blanchard	42	142	9	229	8	6	165	41.88%	36.04%	394
Conant	28	286	10	154	9	0	305	66.45%	62.31%	459
Douglas	32	142	8	320	8	2	160	33.33%	29.58%	480
Gates	34	192	14	215	6	2	214	49.88%	44.76%	429
McCarthy-Towne	47	83	21	330	27	6	137	29.34%	17.77%	467
Merriam	26	131	10	360	15	0	156	30.23%	25.39%	516
Total	167	834	63	1379	58	10	965	35.15%	30.38%	2745
% of Total APS	6.08%	30.38%	2.30%	50.24%	2.11%	0.36%	35.15%			
JHS	57	316	14	552	24	1	355	39.14%	34.84%	907
SHS	119	502	29	1319	52	3	586	30.76%	26.35%	1905
Total	176	818	43	1871	76	4	941	33.46%	29.09%	2812
% of Total A/B	6.26%	29.09%	1.53%	66.54%	2.70%	0.14%	33.46%			
Grand Total	343	1652	106	3250	134	14	1906	34.30%	29.73%	5557
% of Grand Total	6.17%	29.73%	1.91%	58.48%	2.41%	0.25%	34.30%			

## Count Comparison 2012-2014

Levels	Oct. 1, 2012				Oct. 1, 2013				Oct. 1, 2014			
	A	B (1)	C	Tot	A	B (1)	C	Tot	A	B	C	Tot
K	267	43	6	273	281	39	7	288	275	38	7	320
1	312	59	8	320	302	51	6	308	303	37	7	347
2	348	54	8	356	316	60	6	322	314	45	8	367
3	382	53	8	390	365	59	9	374	325	59	11	395
4	354	65	2	356	375	57	7	382	377	55	8	440
5	354	70	2	356	355	71	2	357	377	58	5	440
6	382	75	5	387	358	69	2	360	356	76	4	436
<i>K-6 Ungr.</i>	0	0	0	0	0	0	0	0	0	0	0	0
<i>In D.Pre-sch.</i>	37	5	0	37	41	22	0	41	33	5	1	39
<i>In D Pre-sch Itnt</i>	0	0	0	0	8	2	0	8	17	3	0	20
<i>O.D. Pre-sch.</i>	3	2	0	3	0	2	0	0	1	0	0	1
<i>O.D. SPED K-6</i>	20	7	0	20	24	7	0	24	21	6	0	27
<b><i>Elem Total</i></b>	<b>2459</b>	<b>433</b>	<b>39</b>	<b>2498</b>	<b>2425</b>	<b>439</b>	<b>39</b>	<b>2464</b>	<b>2399</b>	<b>382</b>	<b>51</b>	<b>2832</b>
7	375	74	11	460	389	72	7	468	354	68	6	428
8	396	72	7	475	376	78	9	463	400	73	6	479
<b><i>J.H.S. Total</i></b>	<b>771</b>	<b>146</b>	<b>18</b>	<b>935</b>	<b>765</b>	<b>150</b>	<b>16</b>	<b>931</b>	<b>754</b>	<b>141</b>	<b>12</b>	<b>907</b>
9	408	71	12	491	394	72	9	475	372	76	9	457
10	392	74	7	473	404	73	9	486	400	71	8	479
11	419	107	4	530	393	81	8	482	404	75	7	486
12	379	100	7	486	405	106	6	517	393	82	8	483
<i>9-12 Ungr.</i>	0	0	0	0	0	0	0	0	0	0	0	0
<i>P.G.</i>	0	0	0	0	0	0	0	0	0	0	0	0
<b><i>H.S. Total</i></b>	<b>1598</b>	<b>352</b>	<b>30</b>	<b>1980</b>	<b>1596</b>	<b>332</b>	<b>32</b>	<b>1960</b>	<b>1569</b>	<b>304</b>	<b>32</b>	<b>1905</b>
<b><i>Total JHS &amp; HS</i></b>	<b>2369</b>	<b>498</b>	<b>48</b>	<b>2915</b>	<b>2361</b>	<b>482</b>	<b>48</b>	<b>2891</b>	<b>2323</b>	<b>445</b>	<b>44</b>	<b>2812</b>
<i>O.D. SPED 7-12</i>	45	9	0	54	43	8	1	52	57	9	1	67
<b><i>Sec. Total</i></b>	<b>2414</b>	<b>507</b>	<b>48</b>	<b>2969</b>	<b>2404</b>	<b>490</b>	<b>49</b>	<b>2943</b>	<b>2380</b>	<b>454</b>	<b>45</b>	<b>2879</b>
<b><i>Elem Total</i></b>	<b>2459</b>	<b>433</b>	<b>39</b>	<b>2498</b>	<b>2425</b>	<b>439</b>	<b>39</b>	<b>2464</b>	<b>2399</b>	<b>382</b>	<b>51</b>	<b>2832</b>
<b><i>Sec. Total</i></b>	<b>2414</b>	<b>507</b>	<b>48</b>	<b>2969</b>	<b>2404</b>	<b>490</b>	<b>49</b>	<b>2943</b>	<b>2380</b>	<b>454</b>	<b>45</b>	<b>2879</b>
<b><i>Grand Total</i></b>	<b>4873</b>	<b>507</b>	<b>87</b>	<b>5467</b>	<b>4829</b>	<b>490</b>	<b>88</b>	<b>5407</b>	<b>4779</b>	<b>836</b>	<b>96</b>	<b>5711</b>

*B1 contains Boxborough Choice and staff students.*

*Blanchard is not added in to Total Column on right for 2012 and 2013*

*Blanchard is added in to Total Column on right for 2014*

## *Three Year Comparison K through 12*

<i>Grade Year --&gt;</i>	<i>Gr. K-12 2012</i>	<i>Gr. K-12 2013</i>	<i>Gr. K-12 2014</i>	<i>Total 3 Years</i>	<i>Average 3 Years</i>
<i>Acton Enrollment</i>	4833	4780	4728	14341	4780.33
<i>Boxborough Enrollment</i>	913	873	828	2614	871.33
<i>Total</i>	5746	5653	5556	16955	5651.67
<i>Acton %</i>	84.11%	84.56%	85.10%	84.58%	84.58%
<i>Boxborough %</i>	15.89%	15.44%	14.90%	15.42%	15.42%
<i>Total</i>	100.00%	100.00%	100.00%	100.00%	100.00%
<i>Source 2012 10/1 Report</i>	<i>Elem</i>	<i>Secondary</i>	<i>Total</i>		
<i>Acton</i>	2419	2414	4833		
<i>Boxborough</i>	406	507	913		
	2825	2921	5746		
<i>Source 2013 10/1 Report</i>	<i>Elem</i>	<i>Secondary</i>	<i>Total</i>		
<i>Acton</i>	2376	2404	4780		
<i>Boxborough</i>	383	490	873		
	2759	2894	5653		

*Three Year Comparison  
7 through 12*

Year -->	<i>Gr. 7-12 2012</i>	<i>Gr. 7-12 2013</i>	<i>Gr. 7-12 2014</i>	<i>Total 3 Years</i>	<i>Average 3 Years</i>
Acton Enrollment	2414	2404	2380	7198	2399.33
Boxborough Enrollment	507	490	454	1451	483.67
Total	2921	2894	2834	8649	2883.00
Acton %	82.64%	83.07%	83.98%	83.22%	83.22%
Boxborough %	17.36%	16.93%	16.02%	16.78%	16.78%
Total	100.00%	100.00%	100.00%	100.00%	100.00%



Minuteman School of Applied Arts and Sciences  
October 1, 2014

GRADE	10/97	10/98	10/99	10/00	10/01	10/02	10/03	10/04	10/05	10/06	10/07	10/08	10/09	10/10	10/11	10/12	10/13
9	7	7	8	12	8	9	12	6	11	3	8	7	2	7	10	3	6
10	4	11	8	10	8	6	11	11	8	11	4	6	9	2	7	10	2
11	3	3	7	11	9	6	7	9	9	10	10	2	7	9	1	5	10
12	3	2	3	8	8	13	6	6	9	9	9	9	1	5	7	0	7
PG ACTON TOTAL	7	4	7	6	9	4	2	2	0	4	1	4	3	0	0	0	0
	24	27	33	47	42	38	38	34	37	37	32	28	22	23	25	18	25
9	3	2	1	2	3	1	5	4	2	3	2	6	1	2	0	3	0
10	1	2	2	1	4	2	2	6	4	2	3	2	7	1	1	0	3
11	0	1	2	1	1	2	2	1	4	4	2	3	2	7	1	1	0
12	2	0	0	2	2	1	2	2	1	3	4	2	4	2	5	1	1
PG BOXBOROUGH TOTAL	3	0	3	0	0	2	3	1	3	0	0	0	0	0	0	0	0
	9	5	8	6	10	8	14	14	14	12	11	13	14	12	7	5	4
GRAND TOTAL	33	32	41	53	52	46	52	48	51	49	43	41	36	35	32	23	29

**Enrollment Projections**  
**Acton-Boxborough Regional School District**

**November 2014**

**Revised Enrollment Projections - 11/14**

PUBLIC SCHOOL ENROLLMENT PROJECTIONS									
Elementary School									
Acton, MA: 2003-2026									
Year	K-12	K	1	2	3	4	5	6	Total
2003*	4,517	334	348	369	360	355	365	349	2,480
2004*	4,575	328	352	363	376	365	361	379	2,524
2005*	4,654	308	352	359	372	380	375	370	2,516
2006*	4,712	305	315	371	375	375	387	390	2,518
2007*	4,762	292	320	340	389	394	382	397	2,514
2008*	4,773	301	326	336	349	381	404	384	2,481
2009*	4,830	334	333	349	358	359	391	407	2,531
2010*	4,815	320	347	342	344	369	360	394	2,476
2011*	4,760	294	333	354	351	351	369	361	2,413
2012*	4,768	267	312	348	382	354	354	382	2,399
2013*	4,713	281	302	316	365	375	355	358	2,352
2014*	4,650	275	303	314	325	377	377	356	2,327
2015	4,574	271	294	312	325	330	378	382	2,292
2016	4,472	250	290	303	322	329	331	383	2,209
2017	4,370	246	268	299	313	327	331	335	2,118
2018	4,271	224	263	275	309	318	328	335	2,052
2019	4,149	228	240	270	285	313	319	332	1,988
2020	4,069	232	244	247	279	289	315	323	1,929
2021	3,989	236	248	251	255	284	290	318	1,883
2022	3,887	240	252	256	260	259	285	293	1,845
2023	3,783	244	257	260	264	264	260	288	1,836
2024	3,711	247	261	264	269	268	265	263	1,837
2025	3,674	251	265	268	273	273	269	268	1,867
2026	3,650	262	269	272	277	277	274	272	1,903

PUBLIC SCHOOL ENROLLMENT PROJECTIONS			
Junior School			
Acton, MA: 2003-2026			
Year	7	8	Total
2003*	375	354	729
2004*	351	368	719
2005*	391	351	742
2006*	382	400	782
2007*	395	381	776
2008*	402	407	809
2009*	393	402	795
2010*	395	401	796
2011*	391	408	799
2012*	375	396	771
2013*	389	376	765
2014*	354	400	754
2015	357	361	717
2016	382	364	746
2017	384	390	773
2018	336	391	727
2019	335	342	677
2020	333	342	675
2021	323	339	663
2022	319	330	648
2023	289	325	614
2024	264	294	558
2025	268	269	537
2026	273	274	547

PUBLIC SCHOOL ENROLLMENT PROJECTIONS					
High School					
Acton, MA: 2003-2026					
Year	9	10	11	12	Total
2003*	343	328	315	322	1308
2004*	362	338	332	300	1332
2005*	368	361	341	326	1396
2006*	345	364	369	334	1412
2007*	391	345	366	370	1472
2008*	385	394	342	362	1483
2009*	402	382	383	337	1504
2010*	402	390	370	381	1543
2011*	385	415	387	361	1548
2012*	408	392	419	379	1598
2013*	394	404	393	405	1596
2014	372	400	404	393	1569
2015	396	374	398	397	1565
2016	357	398	372	391	1518
2017	360	359	395	366	1479
2018	385	361	357	389	1492
2019	387	387	359	351	1484
2020	338	389	385	353	1466
2021	338	340	387	379	1443
2022	336	340	338	380	1394
2023	326	337	338	333	1334
2024	321	328	335	332	1317
2025	291	323	326	330	1270
2026	266	292	321	320	1200

**Revised Enrollment Projections - 11/14**

PUBLIC SCHOOL ENROLLMENT PROJECTIONS									
Elementary School									
Boxborough, MA: 2003-2026									
Year	K-12	K	1	2	3	4	5	6	Total
2003*	1,146	66	68	91	87	86	108	95	601
2004*	1,151	66	70	74	98	79	85	109	581
2005*	1,152	67	74	67	75	96	84	88	551
2006*	1,126	60	67	76	68	76	95	87	529
2007*	1,102	54	70	69	72	68	76	95	504
2008*	1,078	58	57	72	71	70	72	77	477
2009*	1,030	45	59	60	66	74	74	73	451
2010*	1,005	48	54	66	61	68	73	70	440
2011*	952	51	49	53	66	60	72	77	428
2012*	897	43	52	51	53	63	65	72	399
2013*	858	35	43	53	55	57	69	64	376
2014*	813	38	37	45	59	55	58	76	368
2015	782	36	40	39	47	60	58	59	338
2016	756	34	39	42	40	47	62	59	323
2017	728	32	36	40	44	40	50	63	305
2018	700	37	34	37	42	44	42	50	287
2019	673	37	40	35	39	42	46	43	282
2020	650	37	40	41	36	39	44	47	285
2021	621	39	39	41	43	37	41	45	286
2022	611	41	42	41	43	43	39	42	291
2023	604	43	44	43	43	43	46	39	301
2024	594	45	46	46	45	43	46	46	317
2025	599	47	48	48	47	46	45	46	327
2026	616	50	50	50	50	48	48	46	341

PUBLIC SCHOOL ENROLLMENT PROJECTIONS			
Junior High			
Boxborough, MA: 2003-2026			
Year	7	8	Total
2003*	97	99	196
2004*	99	96	195
2005*	103	101	204
2006*	91	108	199
2007*	87	92	179
2008*	99	93	192
2009*	77	100	177
2010*	69	75	144
2011*	71	71	142
2012*	74	72	146
2013*	72	78	150
2014*	68	73	141
2015	76	69	145
2016	59	77	136
2017	58	60	118
2018	63	59	123
2019	50	64	115
2020	43	51	94
2021	47	44	91
2022	45	48	93
2023	41	46	87
2024	39	42	81
2025	46	40	86
2026	46	47	93

PUBLIC SCHOOL ENROLLMENT PROJECTIONS					
High School					
Boxborough, MA: 2003-2026					
Year	9	10	11	12	Total
2003*	97	100	74	78	349
2004*	97	102	101	75	375
2005*	103	91	101	102	397
2006*	100	104	96	98	398
2007*	116	100	106	97	419
2008*	87	116	100	106	409
2009*	97	88	116	101	402
2010*	108	101	97	115	421
2011*	78	109	99	96	382
2012*	71	74	107	100	352
2013*	72	73	81	106	332
2014*	76	71	75	82	304
2015	74	76	74	75	299
2016	70	75	79	74	298
2017	78	71	77	79	305
2018	61	79	73	77	290
2019	61	61	82	73	276
2020	66	61	63	82	271
2021	52	66	63	63	244
2022	45	52	68	63	228
2023	49	45	54	68	215
2024	47	49	46	54	196
2025	43	47	50	46	186
2026	40	43	48	50	182

**Revised Enrollment Projections - 11/14**

PUBLIC SCHOOL ENROLLMENT PROJECTIONS									
Elementary School									
ABRSD: 2010-2026									
Year	K-12	K	1	2	3	4	5	6	Total
2010*	5,820	368	401	408	405	437	433	464	2,916
2011*	5,712	345	382	407	417	411	441	438	2,841
2012*	5,665	310	364	399	435	417	419	454	2,798
2013*	5,571	316	345	369	420	432	424	422	2,728
2014*	5,463	313	340	359	384	432	435	432	2,695
2015	5,356	308	335	350	371	389	436	441	2,630
2016	5,228	284	329	345	362	377	393	442	2,532
2017	5,099	277	303	339	357	368	380	399	2,422
2018	4,971	262	296	312	351	362	371	385	2,339
2019	4,823	266	280	305	323	356	365	375	2,270
2020	4,720	269	284	288	316	328	359	370	2,214
2021	4,610	275	288	293	298	320	331	363	2,169
2022	4,498	281	294	297	303	302	323	335	2,136
2023	4,387	287	300	303	307	307	306	327	2,137
2024	4,305	293	306	310	314	311	310	309	2,153
2025	4,273	298	313	316	320	318	314	314	2,194
2026	4,266	312	319	322	327	325	321	318	2,244

PUBLIC SCHOOL ENROLLMENT PROJECTIONS			
Junior School			
ABRSD: 2010-2026			
Year	7	8	Total
2010*	464	476	940
2011*	462	479	941
2012*	449	468	917
2013*	461	454	915
2014*	422	473	895
2015	432	430	862
2016	441	441	882
2017	442	449	892
2018	399	451	849
2019	385	407	792
2020	376	393	769
2021	370	383	753
2022	364	377	741
2023	330	371	701
2024	303	336	639
2025	315	308	623
2026	319	321	640

PUBLIC SCHOOL ENROLLMENT PROJECTIONS					
High School					
ABRSD: 2010-2026					
Year	9	10	11	12	Total
2010*	510	491	467	496	1964
2011*	463	524	486	457	1930
2012*	479	466	526	479	1950
2013*	466	477	474	511	1928
2014	448	471	479	475	1873
2015	470	450	471	472	1864
2016	427	472	451	465	1815
2017	438	429	473	445	1785
2018	446	440	430	466	1782
2019	447	448	441	424	1761
2020	404	450	449	435	1737
2021	390	406	450	442	1688
2022	380	392	406	443	1622
2023	374	382	392	401	1549
2024	368	376	382	386	1512
2025	334	370	376	376	1456
2026	306	335	370	371	1382

Excludes choice  
\* Actual data

Sources: Acton-Boxborough School System  
Acton Town Clerk & Building Commissioner  
Mass. Department of Public Health

NOTE: This scenario is a result of utilizing 5 year average for grade to grade ratios and for kindergarten to birth ratio

# Update on School Enrollment Projections

2014

Peter K. Ashton  
Mary Ann Ashton

November 6, 2014

## Enrollment Continues to Decline

- Enrollment this year is down in both towns
  - Region experienced a decline of 108 students or 2% broken down as follows:

### Acton:

- Elementary enrollment declined by 25 students
- JHS declined by 11 students
- HS declined by 27 students

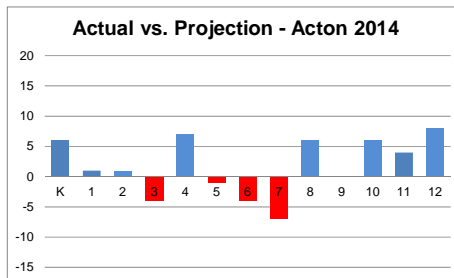
### Boxborough:

- Elementary down by 8 students
- JHS decreased by 9 students
- HS decreased by 28 students

- Continuation of long term trend

## Difference between Projection and Actual for 2014

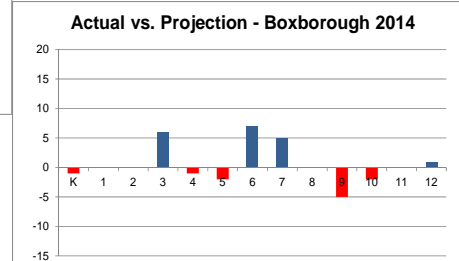
This is where we attempt to show how good we are at predicting the future. Of course this is only one year out, but overall we *under* predicted by 31 students or an error rate of less than 0.5%



Blue means we under predicted, red means we over predicted, e.g., for Acton kindergarten we predicted 269 and 275 arrived

3

Looking back 7 years we were only off by about 3.5% in predicting this year's total enrollment.



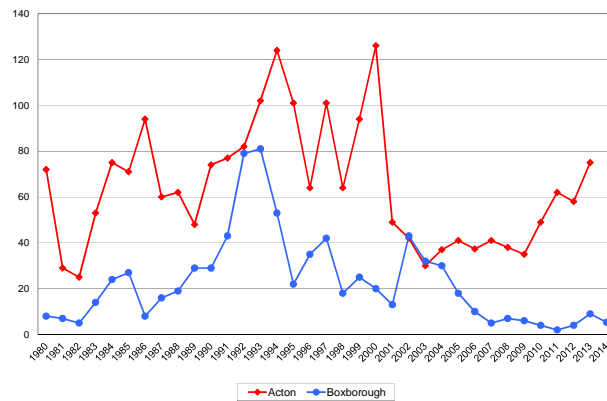
## What is the Cohort Survival Method?

- Computes the ratio of children in one grade compared to the number who “survive” to the next grade
  - Starting point is birth to kindergarten ratio
    - based on relationship between kindergarten enrollments and live births five years earlier
  - Grade progression ratios follow the number of children who advance from one grade to the next
  - Relies on birth data and birth projections
  - Captures effects of net migration, population changes, retention rates, housing trends
    - Assumes history is a reasonable predictor of the future
- Use 5 year average of historical trends

4

## Building Permits by Town

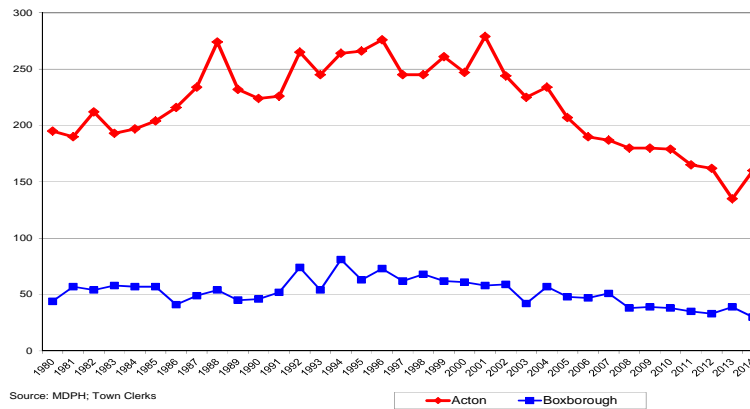
SF Building Permits:



- The number of single family permits in Acton is increasing again after a decade long decline
- Boxborough housing permits have been declining since 2002

5

## Births in Acton and Boxborough

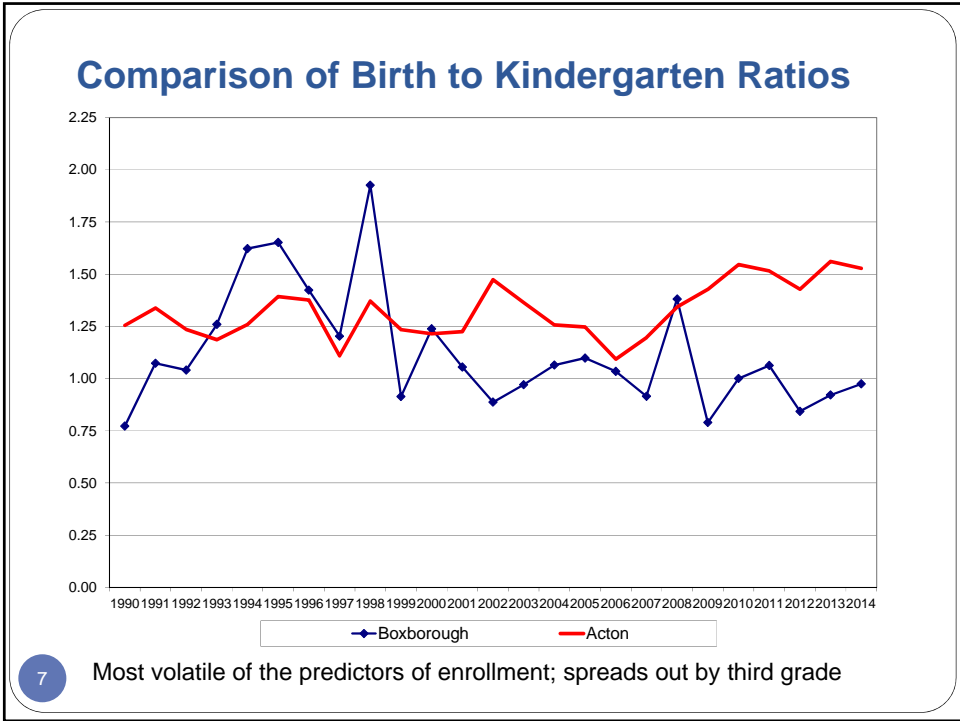


Source: MDPH; Town Clerks

- Acton and Boxborough births declining since 2002; 2013 appears anomalous for Acton
- Reflects a state-wide trend of declining births
- Our birth model suggests some slight increase in the future, but well below the trend observed in 1990s and early 2000s

6





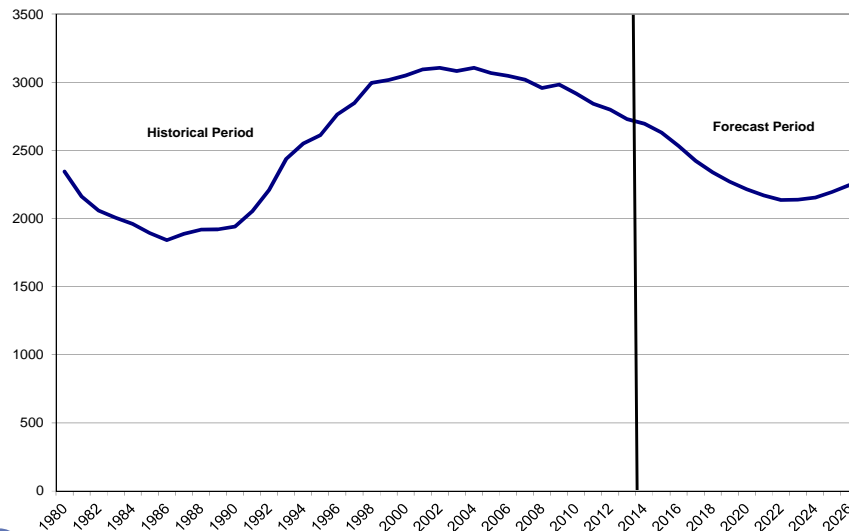
- ## Enrollment Projections
- Projections developed using “standard” model (excludes “choice”)
  - Project separately for the two towns given different trends
  - Birth projections have been revised downward again
  - Residential development on the wane in both towns
  - Housing turnover is picking up as housing market recovers
  - Decline in births and low new construction lead to decrease in enrollment over the next decade
    - If turnover accelerates, this could mitigate the decline slightly
- 8

## Enrollment Projections

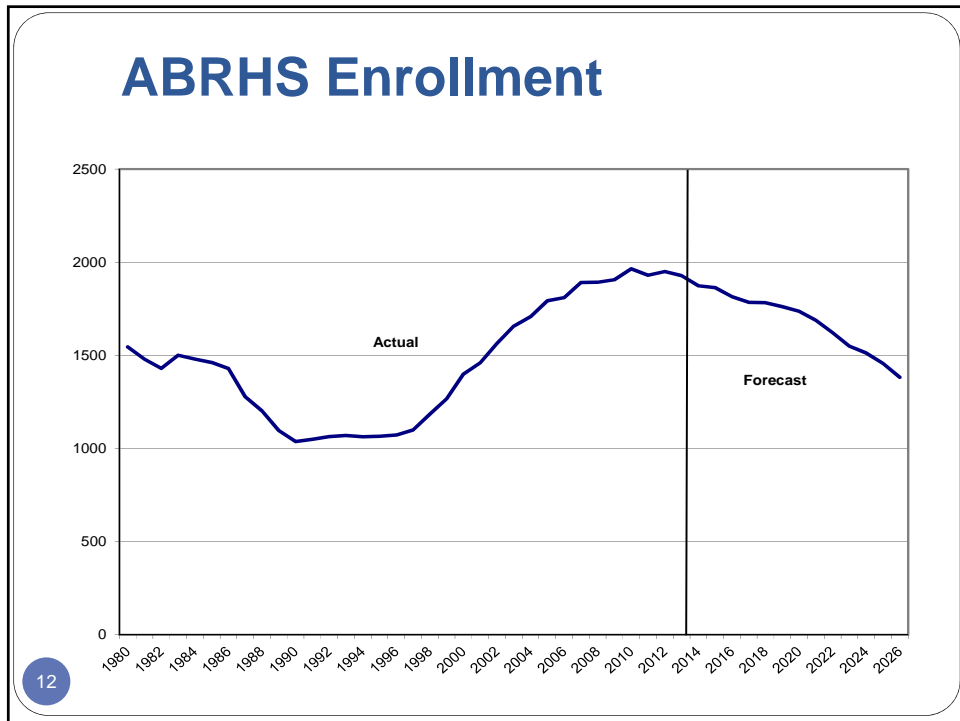
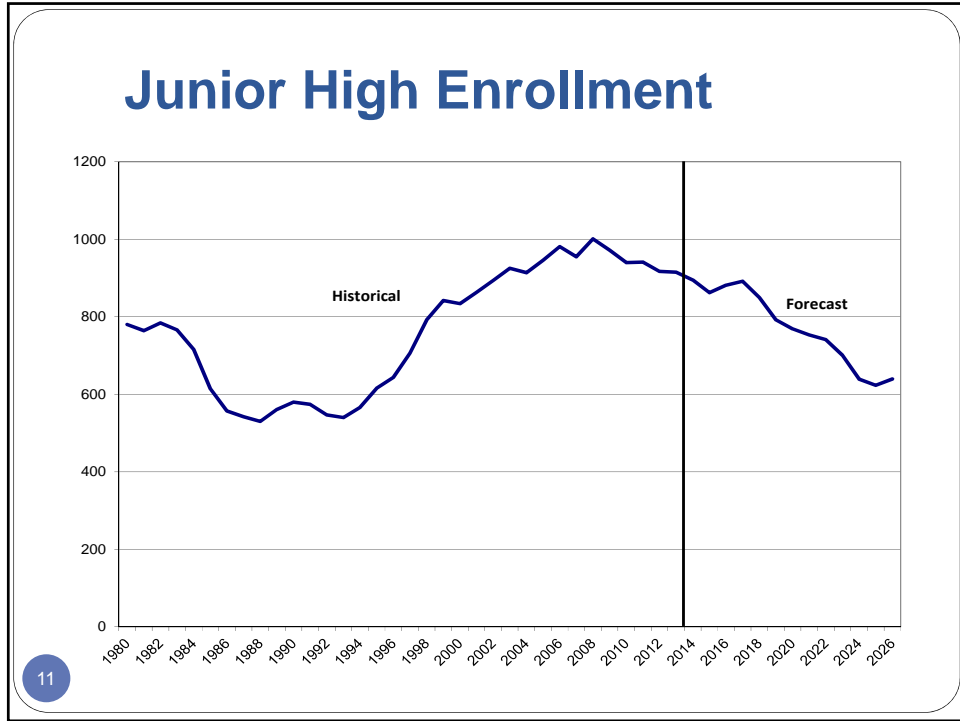
- Region-wide enrollment continues to decline for the foreseeable future
  - A decline of almost 1,200 students region-wide vs. today's enrollment
- Enrollment doesn't begin to increase until 2023 at elementary level
  - Regional elementary enrollment drops by about 550 students between now and 2022; then increases by about 100 students by 2026
  - JHS/SHS both continue to drop; total decline is 740 students between now and 2026
    - Total enrollment at JHS drops to about 625 by 2025
    - HS enrollment drops to 1400 by 2026

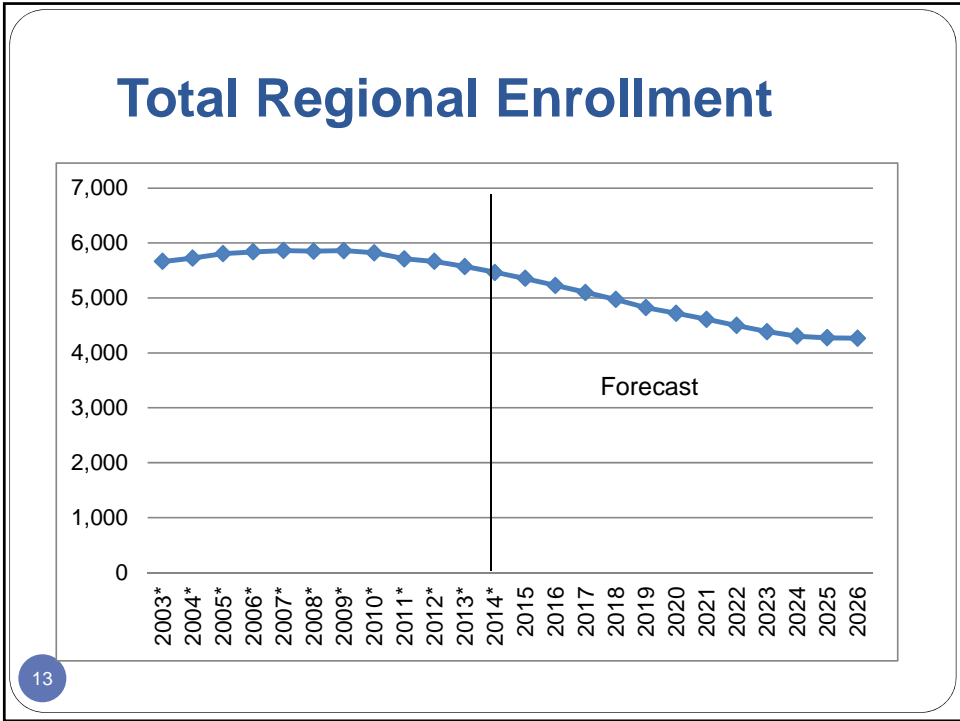
9

## Regional K-6 Enrollment

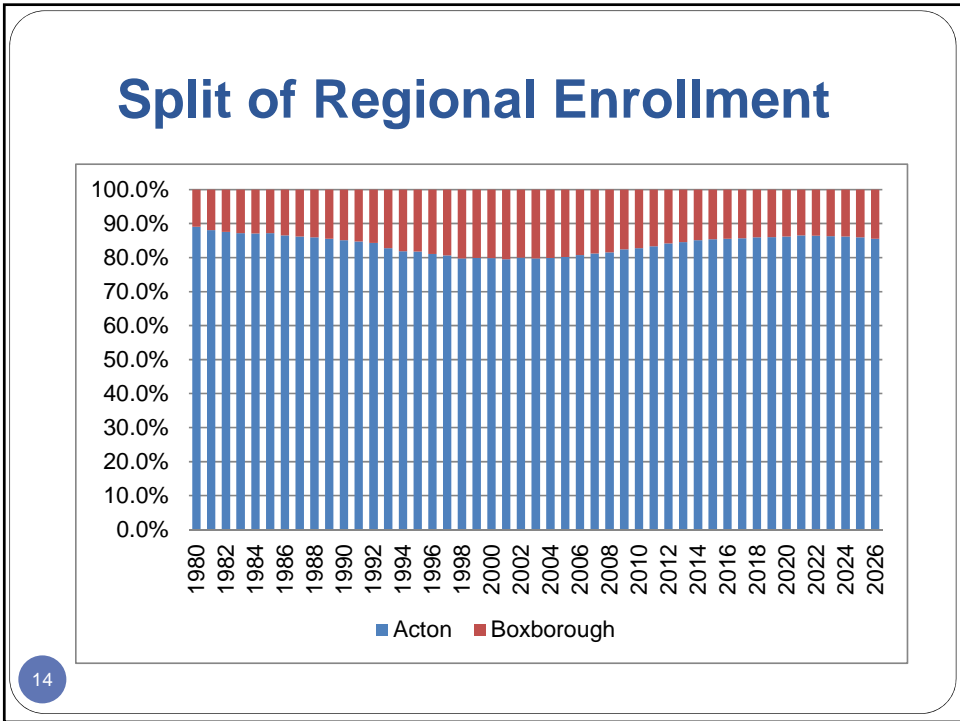


10





13



14